



MINIATURE CIRCUIT BREAKER

BHA Series



Headquarters
<http://www.seec.com.tw>



Breaker & switchgears overseas Sales dept.
<http://circuit-breaker.seec.com.tw>

Applications :

Applicable to the residential, industrial and commercial power distribution systems, provide circuit-control and protection on equipments against any impacts of overload and short-circuit.

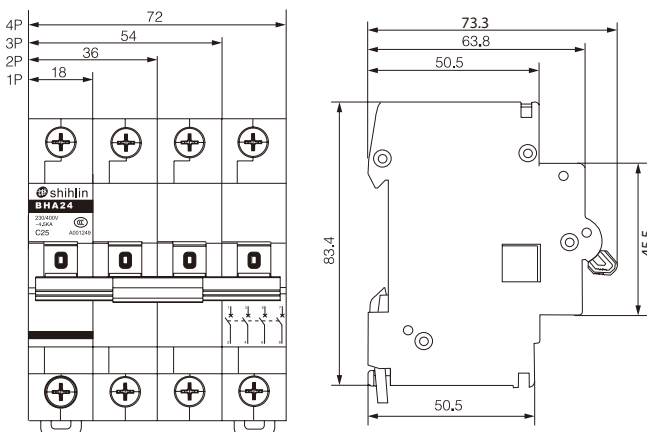
Type designation :

BHA	2	2	C	32
↓	↓	↓	↓	↓
Type	Rated short-circuit breaking capacity (kA) Rated voltage (V)	Number of poles (P)	Tripping characteristics	Rated current I _n (A)
BHA	2: 4.5kA; 3: 6kA; 4: 10kA 230/400V	1, 2, 3, 4	C type: 5~10I _n D type: 10~15I _n	1, 2, 3, 4, 5, 6, 10, 16, 20, 25, 32, 40, 50, 63

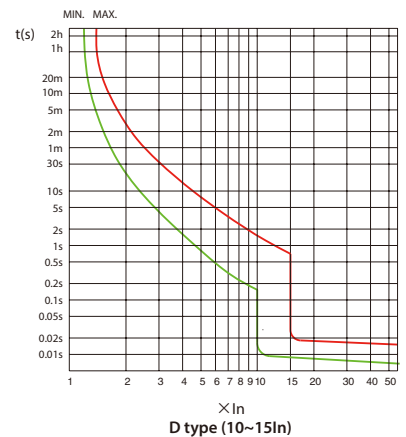
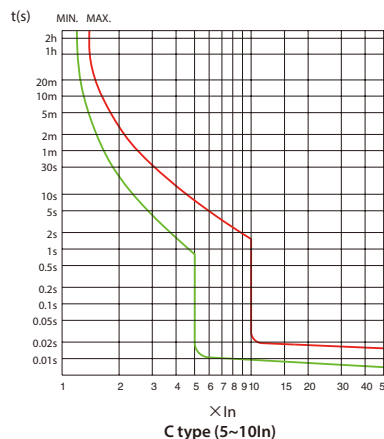
Features :

- Provide circuit protections – Good choice for overload and short-circuit protections.
- Complete accessories available – shunt trip(SHT), under-voltage trip(UVT), over-voltage trip(OVT), auxiliary switch(AX), alarm switch(AL).
- Easy installation – Modularized structure design can be tool-free installed on standard DIN-rail TH35mm.

Dimension :



Characteristic Curve :



Standard :

IEC 60898/ IEC 60947-2 / GB 10963

Technical specification :

- Rated voltage : AC 230/400V
- Rated current : 1~63A
- Rated short-circuit breaking capacity : 4,500/6,000/10,000A
- Tripping characteristics :
C type : 5~10I_n
D type : 10~15I_n
- Mechanical life : 20,000 operations
- Wiring capabilities :
Stranded wire-16mm² / Rigid wire-25mm²
- Ambient temperature : -5°C~+40°C

Accessories :

Features :

- Tool-free, left-mounted on the MCBs.
- Maximum of 3 accessories can be installed on to a single circuit breaker at once.
- Maximum of 2 auxiliary switch (AX) can be installed on to a single circuit breaker at once.

Type designation :

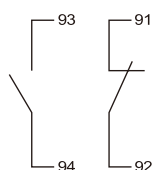
BHK

• Accessories

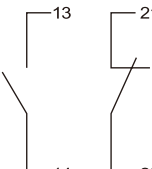
BHK	2					1	
↓	↓					↓	
Type	Accessory Code					Installation	
	1	2	3	4	5	1	2
BHK	AL	AX	SHT	UVT	OVT	Standard	Option

Note: 1. Standard: Left side mounting of breaker
2. Option: Left side mounting of other accessory

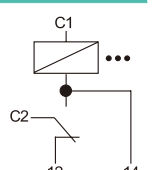


Type	Auxiliary Contact	Width (mm)	Product Code
AL Alarm Switch	 1NO. 1NC 230V 6A 440V 3A	9	BHK11



AX Auxiliary Contact	 1NO. 1NC 230V 6A 440V 3A	9	BHK21 BHK22
-------------------------	---	---	----------------

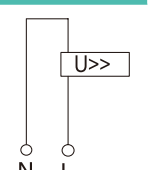


Type	Control Voltage		Auxiliary Contact	Width (mm)	Product Code
	V AC	V DC			
SHT Shunt Trip	 12 24-48 230-415	12 12~48 110-130	1NO. 1NC 230V 6A 440V 3A	18	BHK31 BHK32



UVT Under Voltage Trip	 D1 U< D2	220-240	48	1NO. 1NC 230V 6A 440V 3A	18	BHK41 BHK42
---------------------------	---	---------	----	--------------------------------	----	----------------



Type	Rated voltage	Current	Over voltage range	Trip time	Width (mm)	Product Code	
OVT Over Voltage Trip	 N L U>>	230V	15mA	280V ± 5%	≤ 0.2S	18	BHK51 BHK52